

# NEW RELEASE

PATENT PENDING

## ANTI-LIGATURE LEVER LATCH LOCK

**CONICAL SHANK DESIGN**

**TAPERED FREE-MOVING LEVER**

**LEVER MOVES UPWARDS & DOWNWARDS**

**NO EXPOSED FASTENERS**

Introducing a unique solution for ADA-compliance in mental health facilities. This patent-pending innovation is the first ADA compliant suicide-resistant lever set. Designed to work with traditional mortise or cylindrical openings, this responds to the growing need for code-compliant solutions within psychiatric hospitals and mental health wards.



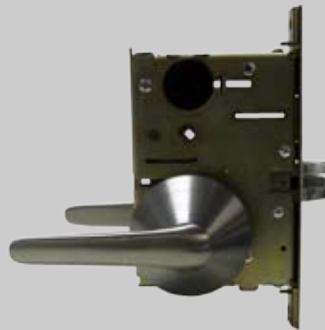
### CYLINDRICAL MODEL

**PASSAGE**



### MORTISE MODELS

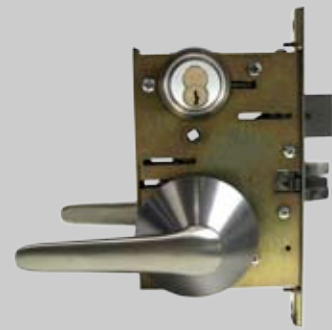
**PASSAGE**



**SECURITY**



**DEADBOLT**



### DESCRIPTION



The levers are free-moving and tapered to resist suicide attempts from over the door and moving downward. Each lever has built-in movement restrictors to reduce lock body wear and tear.

The tapered lever meets "seamlessly" with the conical thru-bolted segments. The conical shanks are tapered to resist grasping by string or other object. Independent lever springs assure years of trouble-free usage.

The escutcheons are thru-bolted for added strength.

Additional models include mortise latch and deadbolt lockset, with deadbolt operation by key from exterior only.